

# Silimed Calf Implant

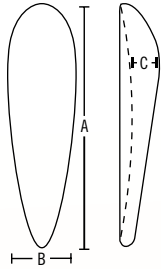


# Silimed Calf Implants

The calf implants are designed for cosmetic treatment and to correct the unevenness or irregularities of the calf such as those caused by congenital malformation, neurological diseases or trauma. Formed by a silicone elastomer envelope. Used in reconstructive and cosmetic surgery. Provided in two different types: Symmetrical and Asymmetrical. Supplied sterile.

### ASYMMETRICAL BASE

Design by Dr. Montellano

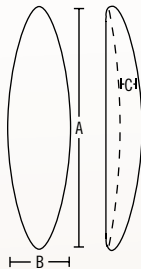


Silicone Elastomer - Smooth Surface

REF	VOLUME cc	DIMENSIONS cm		
		A	B	C
412-150	70	15.0	4.7	1.5
412-200	125	19.7	5.4	1.9
412-230	175	23.5	5.8	1.9

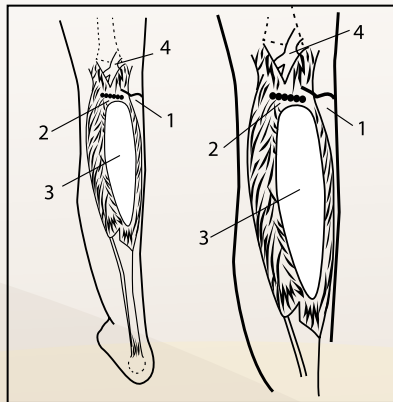
### SYMMETRICAL BASE

Design by Dr. Glicenstein



Silicone Elastomer - Smooth Surface

REF	VOLUME cc	DIMENSIONS cm		
		A	B	C
402-065	15	6.6	2.7	1.2
402-100	30	9.9	3.1	1.5
402-160	50	15.8	3.1	1.6
402-190	70	19.1	3.2	1.8
402-260	140	26.2	4.2	2.4
402-270	105	26.9	3.6	1.9



### CALF IMPLANT

- 1) INCISION IN THE SKIN
- 2) INCISION OF THE APONEUROSIS OF THE MEDIAL GASTROCNEMIUS MUSCLES
- 3) IMPLANT
- 4) INNER POPLITEAL SCIATIC NERVE



Caution: Federal (USA) law restricts this device to sale by or on the order of a physician.