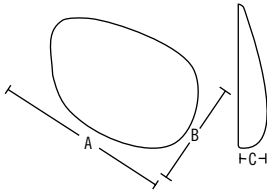


Silimed Pectoral Implant



Silimed Pectoral Implant

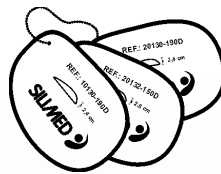
Designed to highlight the aesthetic appearance in patients with an underdeveloped or disproportionate chest. Pectoral implants were developed for reparatory surgery in the cases of patients suffering from deficiencies in the pectoral region such as congenital pectoral aplasia. These implants are available in various sizes and a textured surface. Supplied sterile.



Silicone Elastomer - Textured Surface

REF	VOLUME cc	DIMENSIONS cm		
		A	B	C
20132-150D	190	14.9	11.3	2.6
20132-150E	190	14.9	11.3	2.6
20132-160D	230	15.9	11.8	2.8
20132-160E	230	15.9	11.8	2.8
20132-170D	300	16.9	12.7	3.2
20132-170E	300	16.9	12.7	3.2

D=right E=left



Template
REF - 90132-006

The incision is made in the axillary region and must be wide enough (about 5 cm) to permit the insertion of the implant (Fig 1); the pocket is made underneath the largest pectoral muscle, undermining it without removing it from the smaller pectoral muscle. The undermining procedure should be interrupted 1 to 2 cm below the areola (Fig 2), otherwise the implant will be positioned too low, producing a feminine appearance; the pocket must be carefully inspected to check for any remaining muscle fibers. With the help of long tongs, secure the polyester tag of the implant and insert it in the pocket, placing it between the two pectoral muscles and making sure that the angles of the implant match those of the muscle (Fig 2).



Fig 1 - Incision

Fig 2 - Undermining and introduction

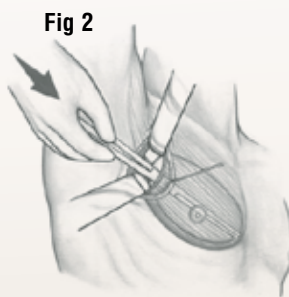


Fig 2

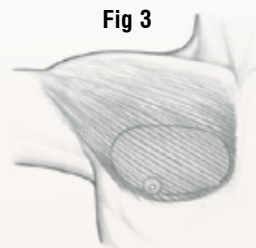
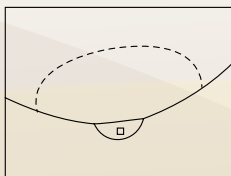


Fig 3 and 4 - Final result

Fig 4



IMPORTANT: These devices contain a polyester reinforcement to help in the insertion procedure. Supplied in different shapes for the left and right side (symmetrical).



The plastic template must be used to choose the size of the implant. The position of the implant must be marked using the selected template.



Caution: Federal (USA) law restricts this device to sale by or on the order of a physician. This pectoral implant is not indicated for use as a breast implant and the safety and effectiveness of its use for augmentation, reconstruction or revision of the breast has not been established.